

Turbo HD DVR V3.3.1 Release Notes



Reference NO:	20151030_01
Product Classification:	Turbo HD DVR
Date of Publication:	October 20, 2015
Edit Department:	Overseas Technical Support Dep.

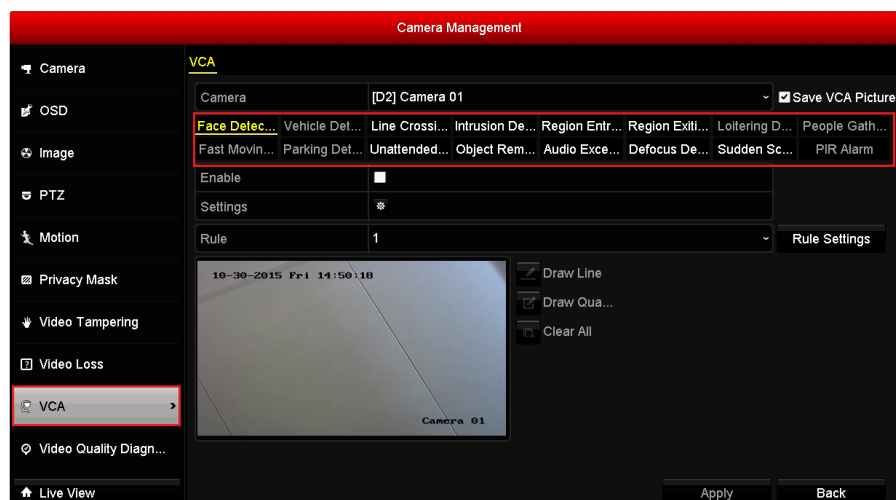
Reason of Upgrade

Newly add some new functions and fix some small bugs existing on previous firmware versions, so as to improve the performance of Hikvision Turbo HD DVRs and enhance customers' experience of analog surveillance system.

Firmware Updates

New Features

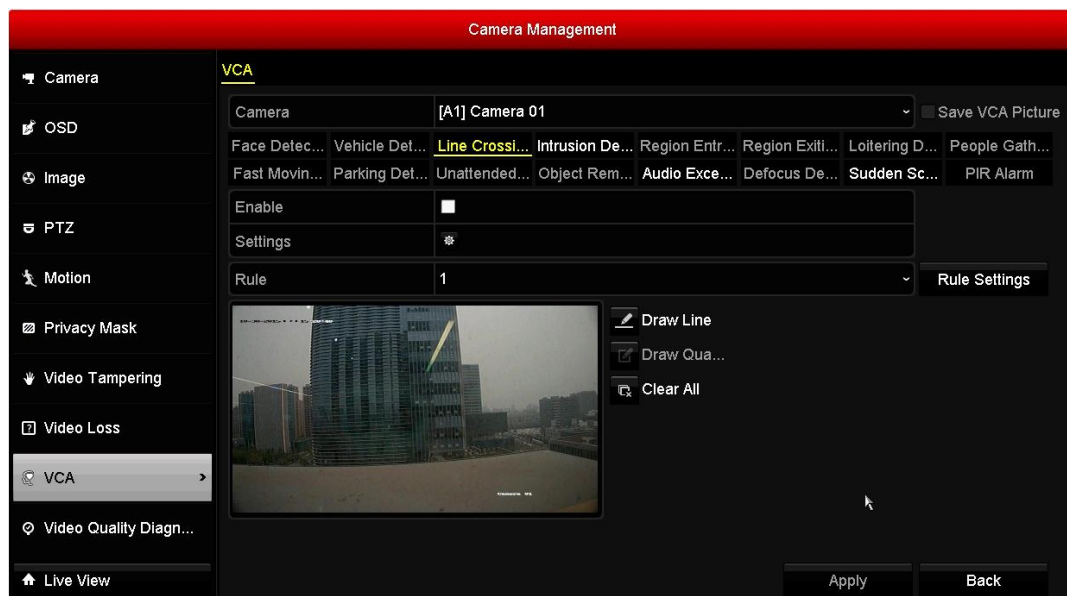
- i. Newly introduce HQHI-E series Turbo HD DVRs (DS-7204HQHI-E1; DS-7208HQHI-E1; DS-7208HQHI-E2; DS-7216HQHI-E2) into the market. This series support **Lite 1080P** resolution (960*1080), which consumes the similar video bitrates as 720P resolution(1280*720), while brings the clear viewing benefits similar with 1080P resolution(1920*1080);
- ii. IPCs' VCA Detection rules, like **Line Crossing**, **Intrusion Detection** etc. now can be separately configured via DVR local menu. After checking the "**Save VCA Picture**" checkbox, the VCA captured Pictures uploaded by IPCs can also be saved into DVR local HDD for further VCA search;



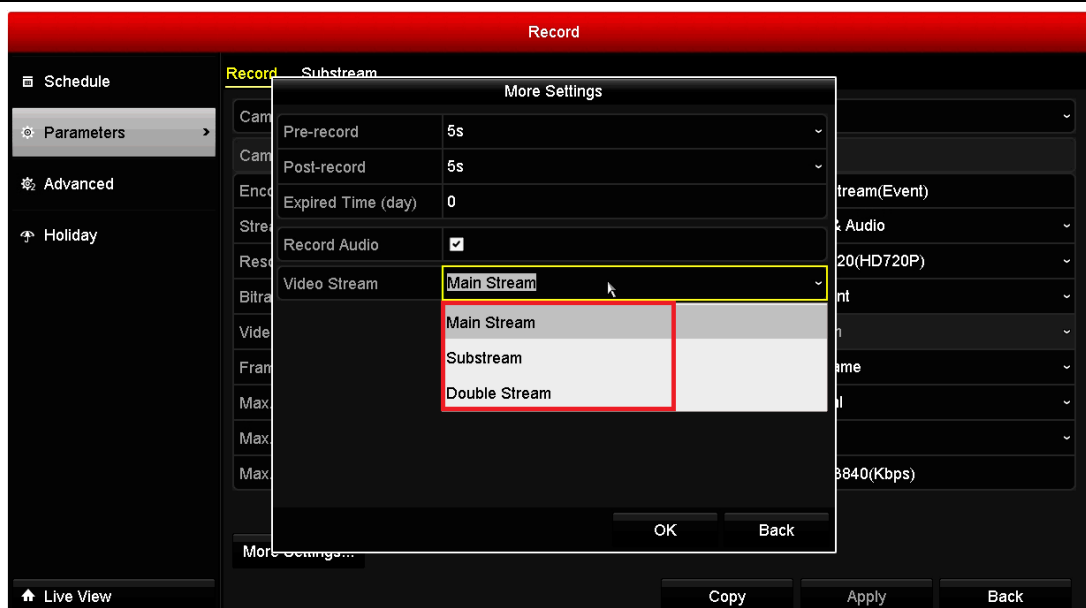
- iii. Add **VCA search** module on the DVR GUI menu in order to search out the required video clips for various VCA events, including **Behavior Analysis**, **Face Detection**, **Plate Search**, **People Counting** and **Heat Map** (VCA info is uploaded from IPCs and saved on the DVR HDDs);



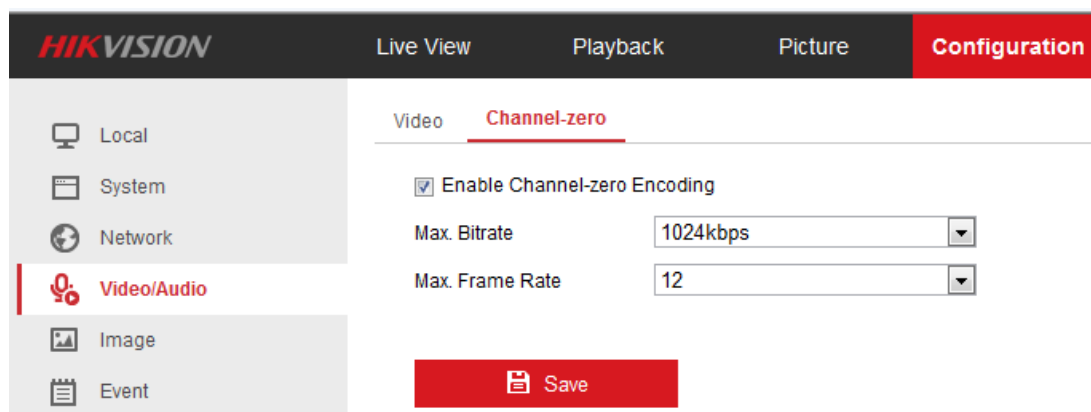
- iv. During Smart Playback for IPC channels, **Face Attributes**, including **Gender**, **Age** and **Wear Glasses or not** can be set as the filter condition;
- v. New VCA types as **Sudden Scene Change** is supported for analog channels on Part series of Turbo HD DVRs, and **Audio Exception Detection** is supported for all models;



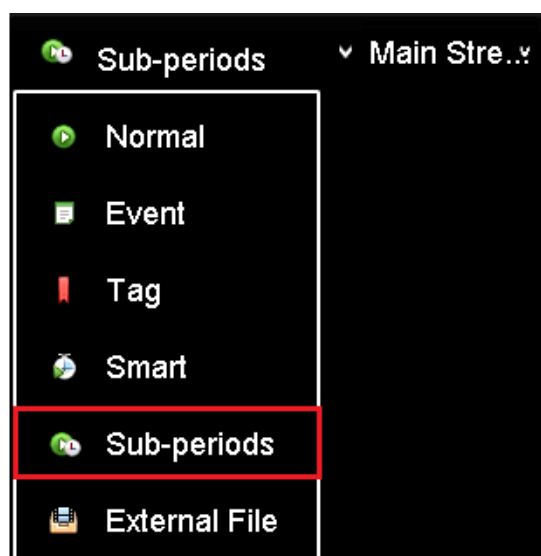
- vi. Newly add **Double Stream** recording type, thus it supports main stream and sub stream recording simultaneously: **Record**→**Parameters**→**More Settings**.



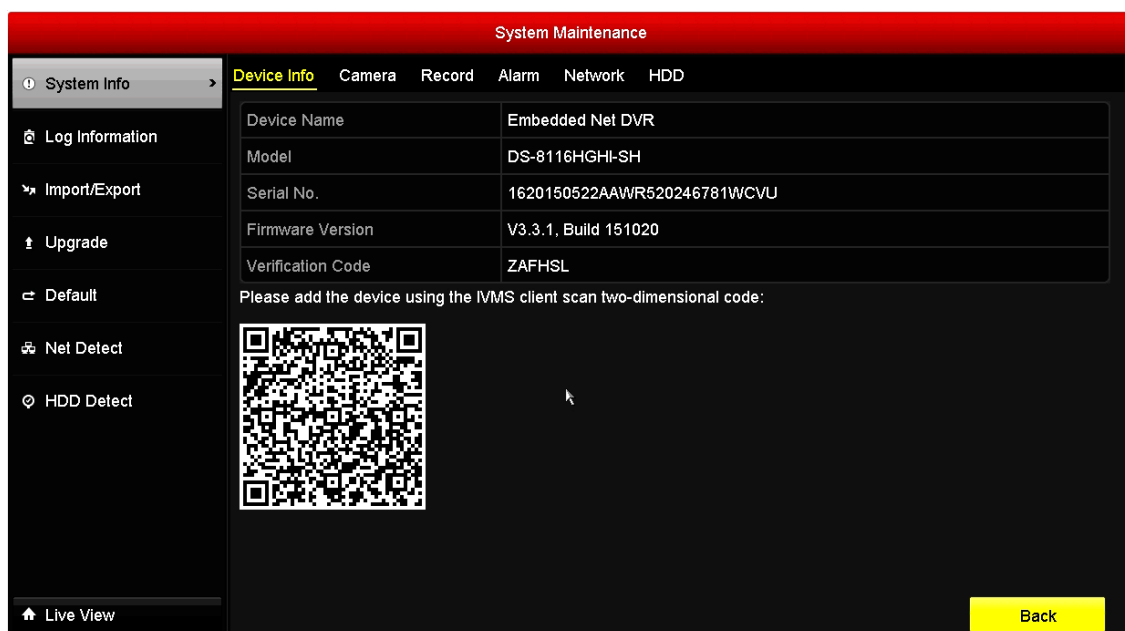
- vii. Newly add **Channel-zero** function on DS-7200HGHI-SH series Turbo DVR;



- viii. Support 1005K USB Keyboard access for control;
- ix. Support **Sub-periods** playback for selected single channel: **Menu->Playback->Sub-Periods**.



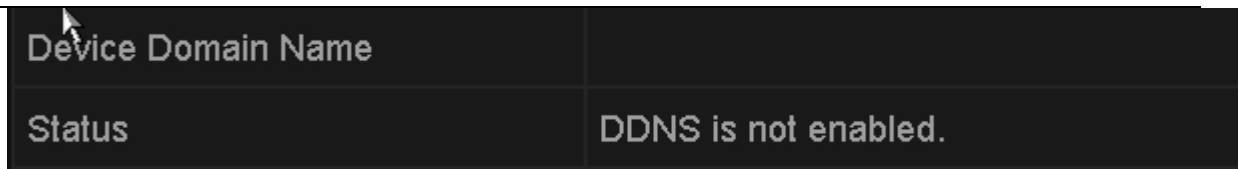
- x. Support ultra-high speed playback, more playback speed options for fast forward: 32x, 64x, 128x, 256x.
- xi. Add a QR code in DVR's local GUI: **Menu->System maintenance->System Info**, the QR code includes device information such as IP address, port number, username and password, it can be scanned on Hikvision mobile app iVMS-4500 for a quick device add.



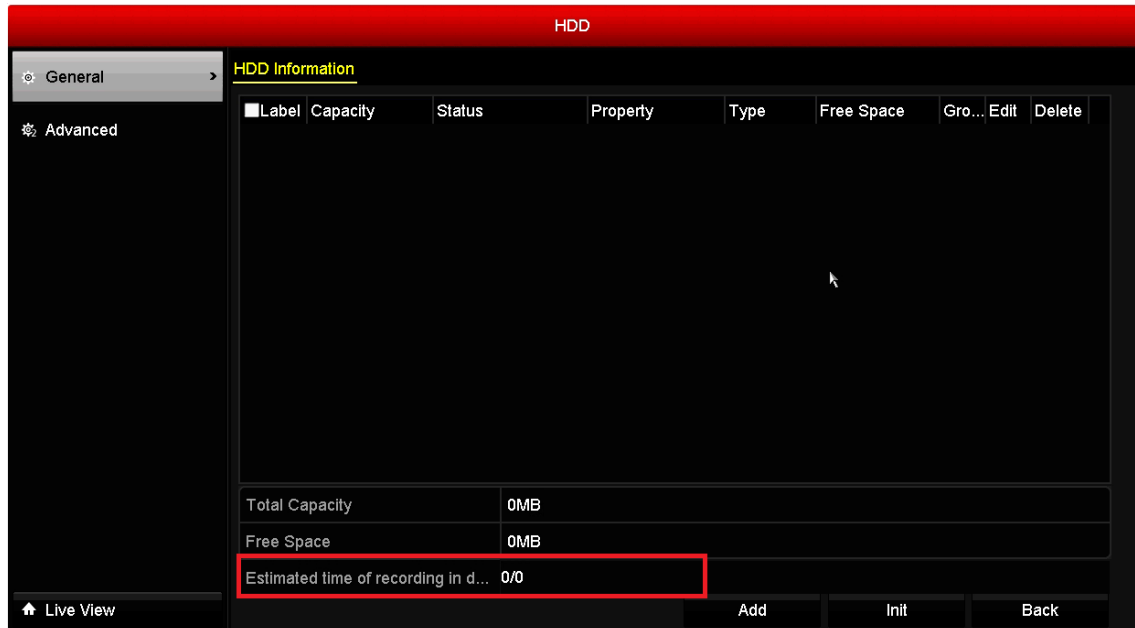
- xii. Optimize the Raid function for DS-9000HQHI-SH, RAID fast rebuild and group Sleep tech is introduced;
- xiii. Support IPC **Rotate** mode, IPC's **rotate mode and mirror mode** can be configured on NVR's local menu;



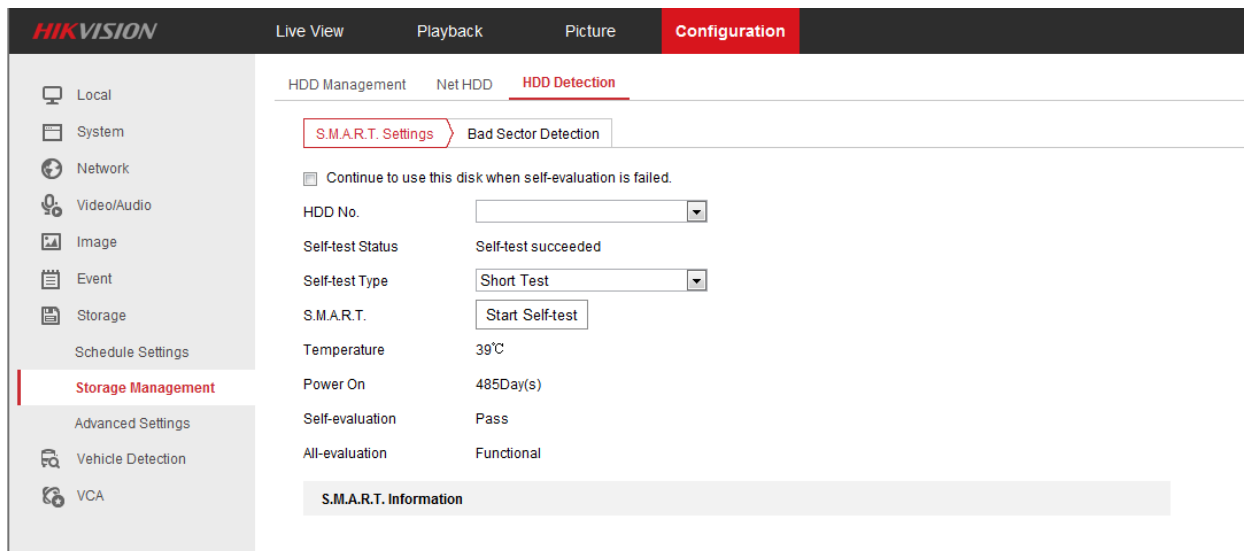
- xiv. Support Hikvision DVS, Fisheye cameras and EZVIZ cameras access;
- xv. Add the function of **copy and paste** for the edit box on local menu;
- xvi. Newly Add **DDNS status** display under the DDNS interface;



- xvii. Show the total recording time supported and estimated remaining recording time in HDD Management interface: **Menu->HDD->General**.



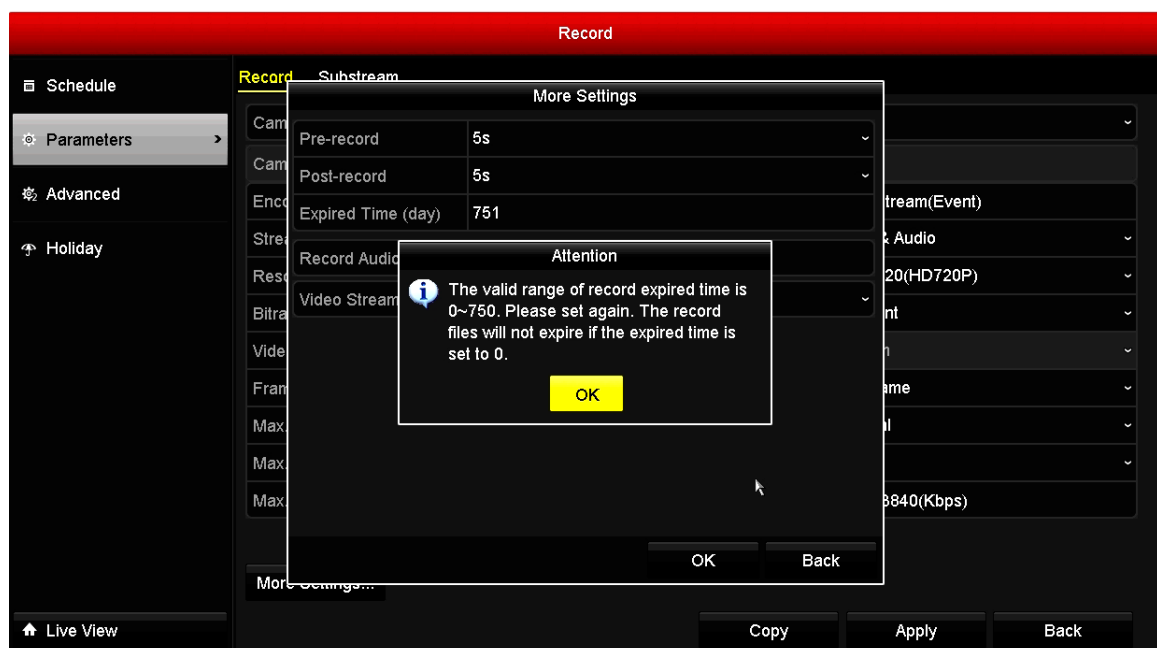
- xviii. Add the HDD detection on the web interface: **Configuration-> Storage-> Storage Management**.



- xix. Support video clip Export as AVI format;
- xx. Support VGA/HDMI simultaneous and non-simultaneous output configuration on DVR GUI menu for DS-73/81/9008(16)HQHI-SH;

Features Changed

- i. Optimize the **Region/Country** under the DDNS interface, add some new countries;
- ii. Remove the **SNMP** function from the DVR under the network interface;
- iii. Max numbers supported for video search has been changed to 2000 from 4000;
- iv. Do not support eSATA disk format when the size is more than 2TB;
- v. Up to 8 IPSANs can be added as the network storage, while only 1 IPSAN is supported previously;
- vi. Optimize the streaming strategy for 4-division windows IP channels live view from sub streaming to main streaming as default in order to improve the live view quality.
- vii. Enhance the recording expired time up to 750 days from 60 days



Related product list:

HQHI-E Series Turbo HD DVR	DS-7204HQHI-E1, DS-7208HQHI-E1, DS-7208HQHI-E2, DS-7216HQHI-E2
HGHI-SH & HQHI-SH Series Turbo HD DVR	DS-7104HGHI-SH, DS-7108HGHI-SH, DS-7104HQHI-SH
	DS-7204HGHI-SH, DS-7208HGHI-SH, DS-7216HGHI-SH
	DS-7204HQHI-SH, DS-7208HQHI-SH, DS-7216HQHI-SH
	DS-7304HGHI-SH, DS-7308HGHI-SH, DS-7316HGHI-SH, DS-7324HGHI-SH, DS-7332HGHI-SH, DS-7304HQHI-SH, DS-7308HQHI-SH, DS-7316HQHI-SH
	DS-8104HGHI-SH, DS-8108HGHI-SH, DS-8116HGHI-SH, DS-8124HGHI-SH, DS-8132HGHI-SH, DS-8104HQHI-SH, DS-8108HQHI-SH, DS-8116HQHI-SH
	DS-9004HQHI-SH, DS-9008HQHI-SH, DS-9016HQHI-SH

Firmware version

V3.3.1, build 151020

Customer Impact and Recommended Action

This new firmware upgrade is to improve product performance, and will take effect automatically after upgrading from previous versions. We'd like to inform you the above changes. Also, we are sorry for any possible inconvenience of use-habit changes caused by this action.

For questions or concerns, please contact our local technical support team.

Note:

- Hikvision has all rights to alter, modify and cancel this notice.
- Hikvision doesn't give any guarantee for old models' stock.
- Hikvision is not liable for any typing or printing errors.
- For special model's change details, please contact our local technical support team.

Hikvision Digital Technology CO., Ltd.
No. 555 Qianmo Road, Binjiang District, Hangzhou 310052, China
Tel: +86-571-8807-5998
FAX: +86-571-8993-5635
Email: support@hikvision.com